



# Lebanon National Operations Room

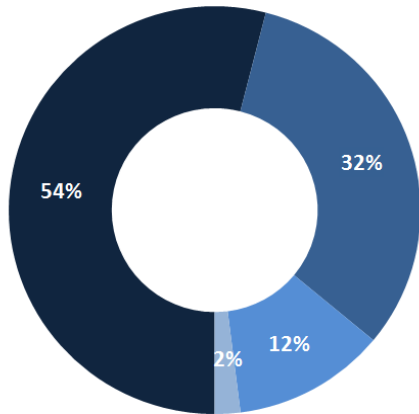
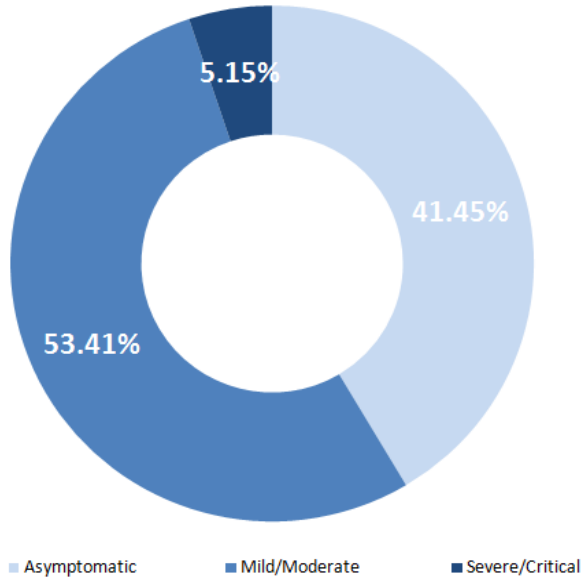
## Daily Report on COVID-19

Saturday, June 20, 2020

Report #94

Time published: 17:00

### Status of Cases



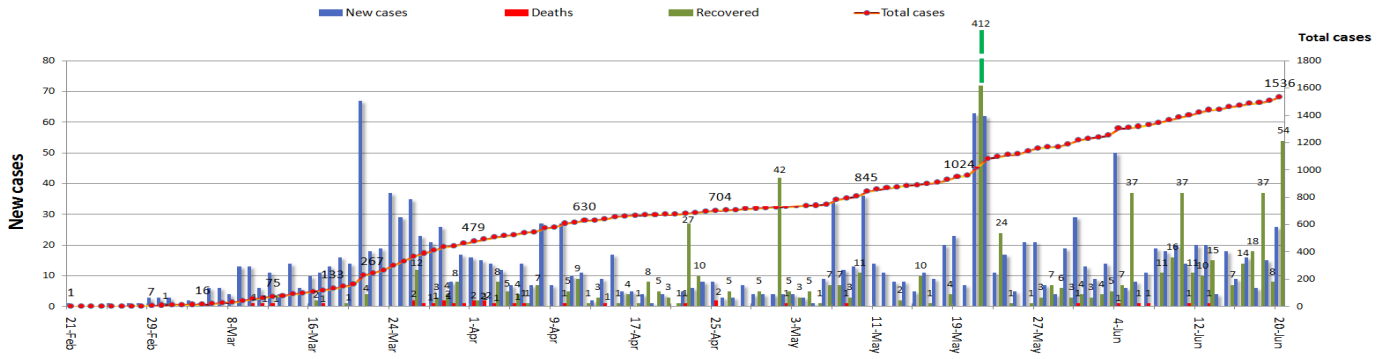
Total registered cases since Feb. 21	1536
locals	1048
Lebanese expats	488
Recoveries	1006
Deaths	32
Total registered cases in the past 24 hrs.	26
locals	24
Lebanese expats	2
Conducted PCR tests in labs since Feb. 21	113,946
PCR tests conducted in the last 24 hrs. (in labs and in the airport)	1575
<b>498 active cases</b>	
457 in home isolation	
41 are currently hospitalized	
34 mild cases	
7 in ICU	

### Comparison between Lebanon and other countries

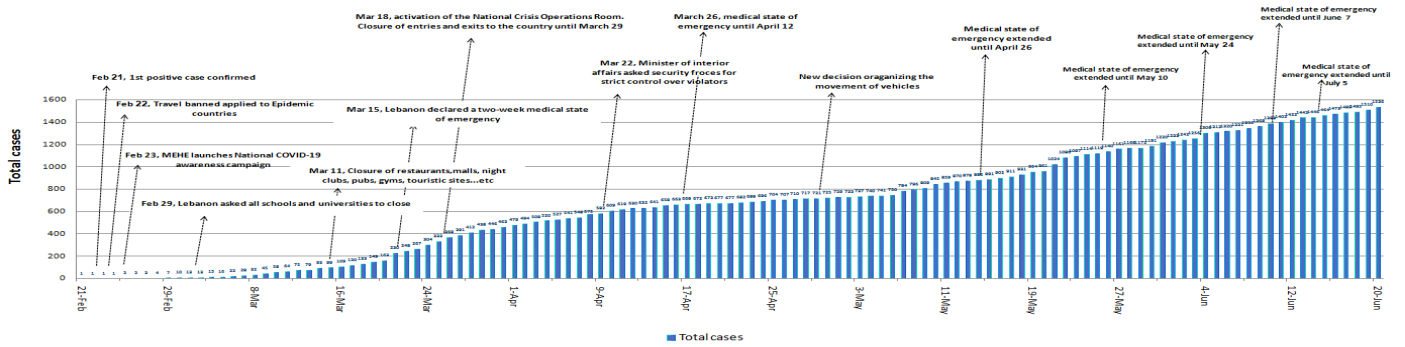
	Lebanon	Internationally
Total registered cases	1536	8,795,298
Total deaths	32	463,262
Percentage of deaths	2.08%	5.26%
Number of recoveries	1006	4,653,895

\*the above data was last updated at 4:00 pm

## Cases per Day

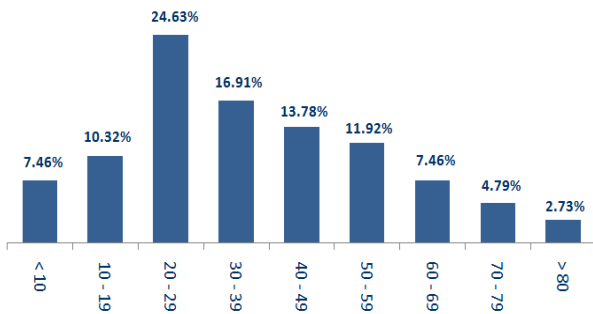


## Chronology of decisions according to number of cases



## Distribution of cases by age group

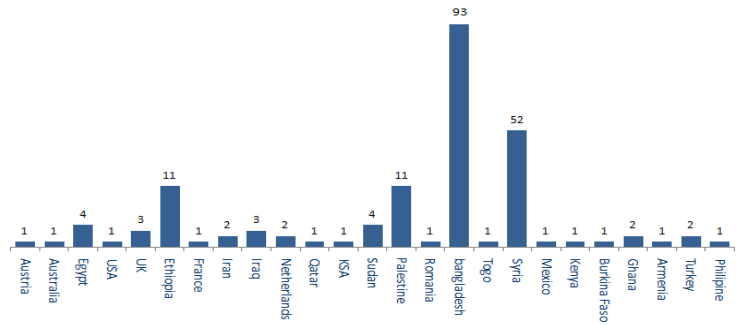
Distribution of cases by age group (%)



## Distribution of cases by nationality

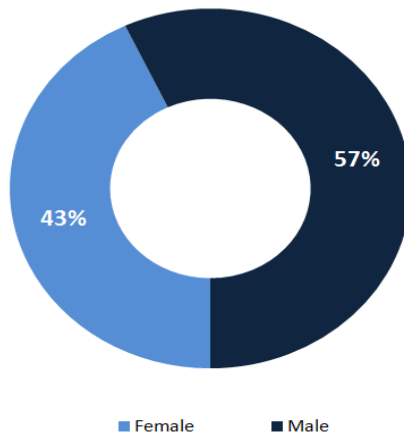
Distribution of cases by nationality

Lebanese: 1334 cases out of 1536 ( 87 % )

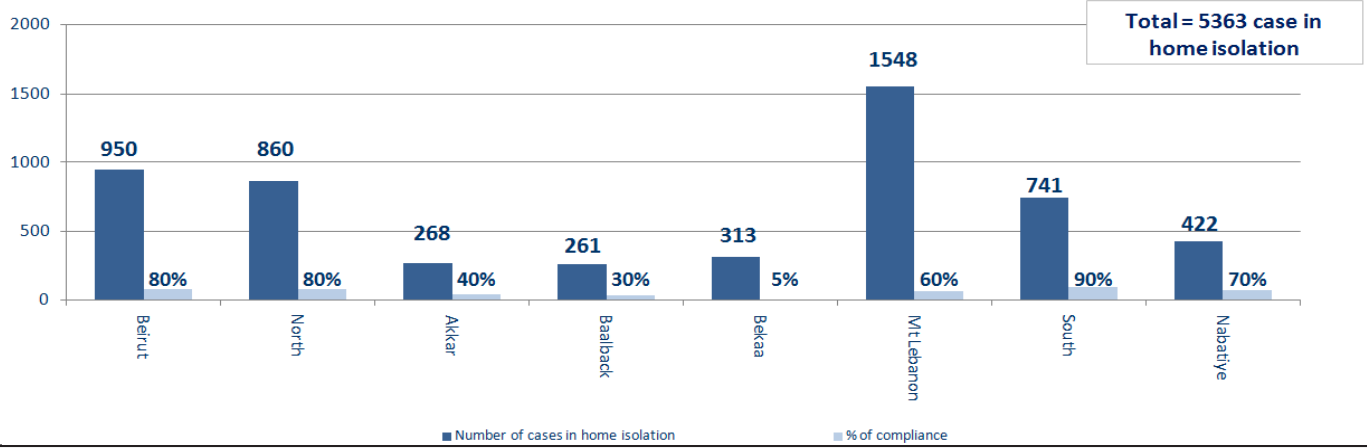


## Distribution of cases by gender

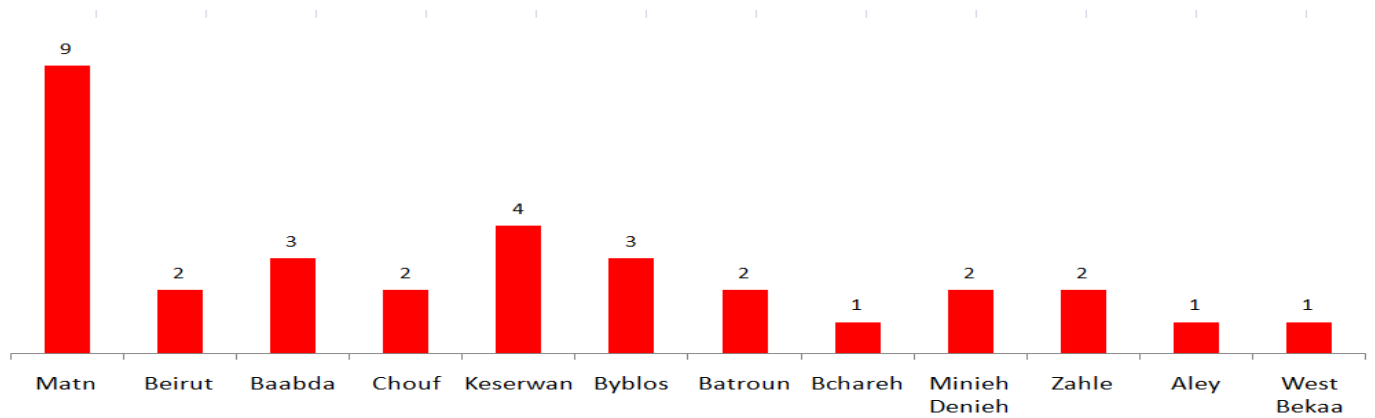
Distribution of cases by gender (%)



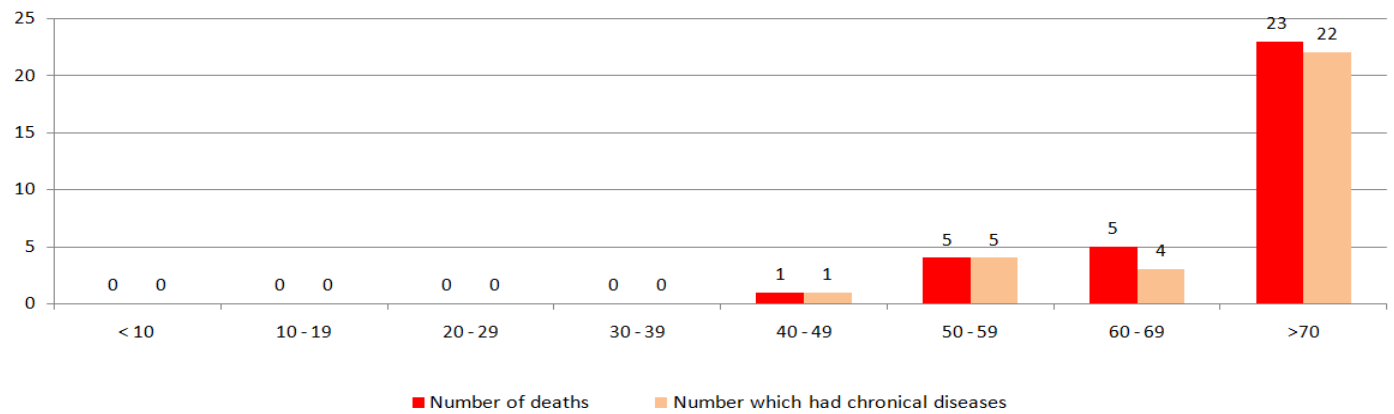
## Number of individuals in home isolation and percentage of commitment to isolation



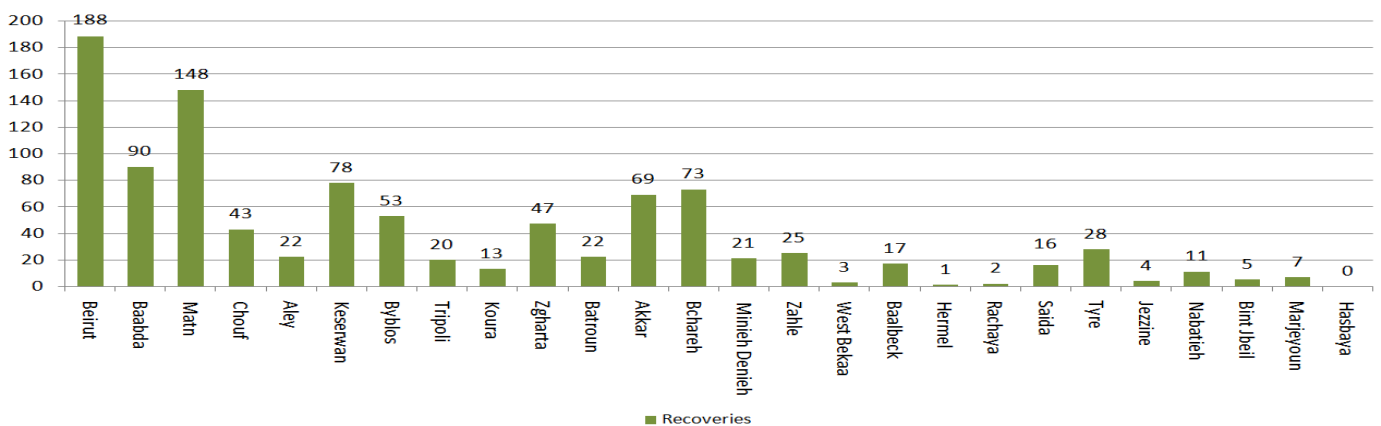
## Distribution of deaths by governorates



## Distribution of deaths by age

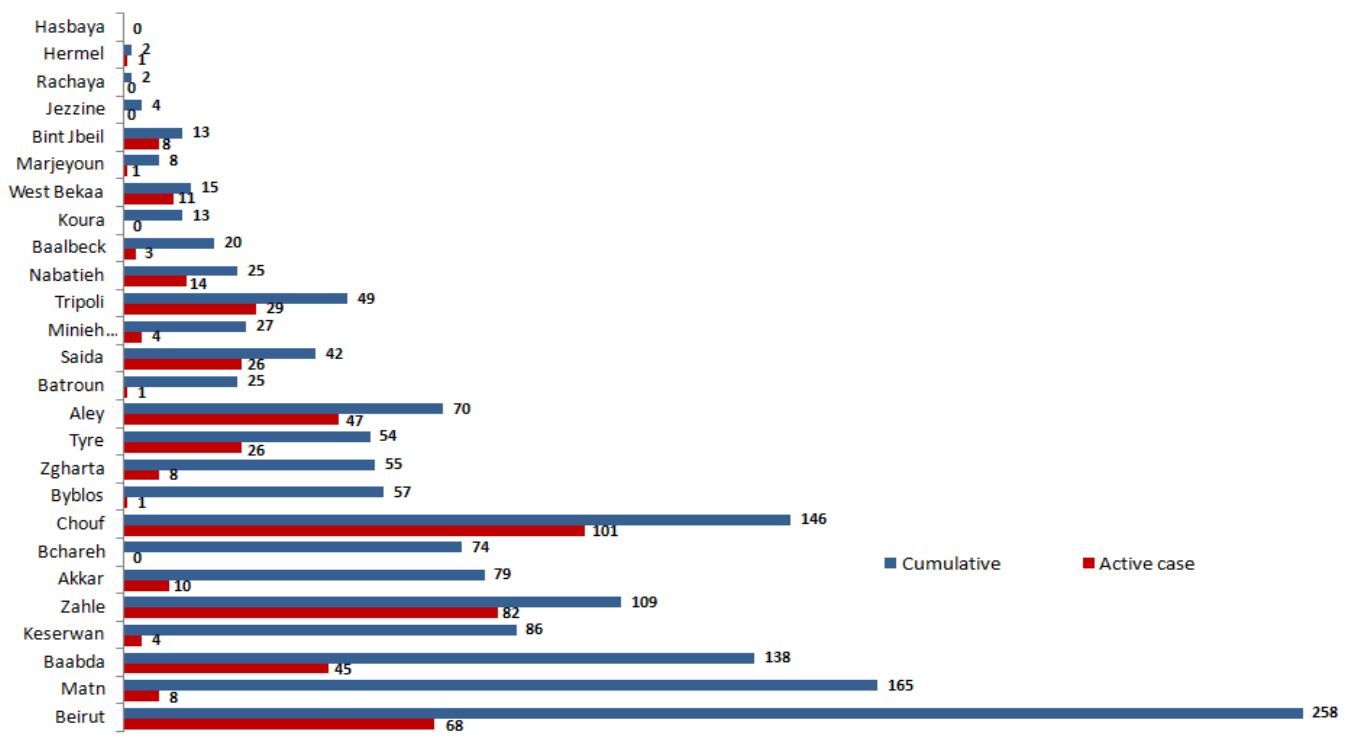
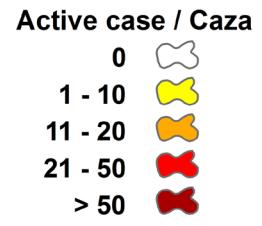
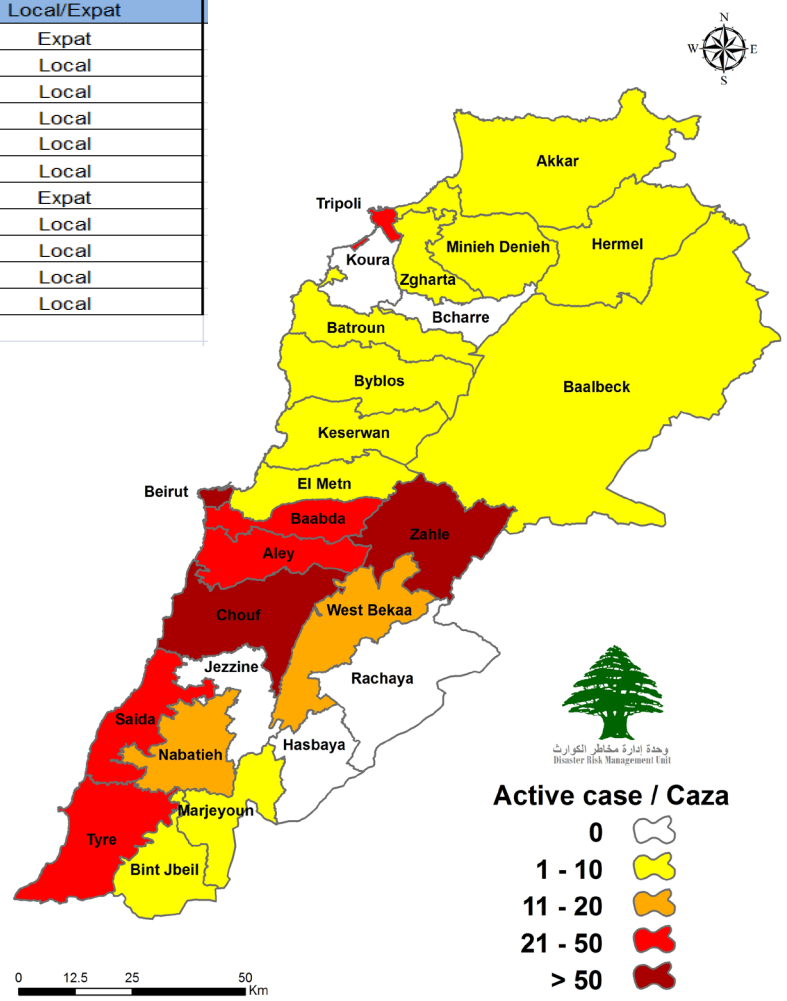


## Distribution of recoveries by area



## Number of Cases by Location

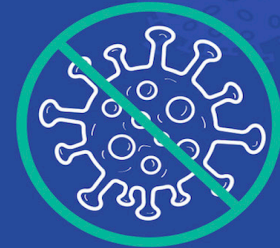
Municipality	Number of cases	Local/Expat
Becharah Khoury (Beirut)	1	Expat
Baabda (Baabda)	1	Local
Bir Hassan (Baabda)	4	Local
Tahwatat El Ghadir (Baabda)	4	Local
Barja (Chouf)	2	Local
Wadi El Zeine (Chouf)	1	Local
Houmal (Aleyh)	1	Expat
Wadi El Nahle (Tripoli)	9	Local
El Qobe (Tripoli)	1	Local
El Mankoubin (Tripoli)	1	Local
Saida (Saida)	1	Local
<b>Sum</b>	<b>26</b>	



## Examples of violations and lack of commitment

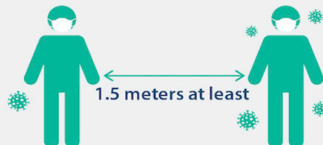
- Demonstration, and Roadblocks
- Violations of the car mobility, curfew, and the medical mask decisions
- Failure of commercial stores, supermarkets, and others to comply with the closing hours
- Overcrowding in restaurants and cafes and failure to comply with the permitted number of customers (50%)
- gatherings in front of banks, money transfer offices and ATM machines without maintaining a safe distance or putting masks
- Gathering of citizens in hiking areas without committing to preventive measures
- Non-compliance of citizens with preventive measures in food markets
- Gathering in cafes
- hookah
- gatherings on beaches and sidewalks without wearing masks.
- Opening of sports clubs and electronic and game stores
- social gatherings and celebrations
- percentage of commitment varies between 5% and 50%

**LET'S STAY COMMITTED SO IT IS  
REMEMBERED BUT NOT  
REPEATED...**



### Physical Distancing

Keep a safe distance



- Wear face masks outside the house
- Avoid touching the face
- Cover mouth and nose with elbow when coughing or sneezing

### Prevention

### Hygiene



- Wash your hands for at least 20 seconds
- Sterilize your purchased products before use or storing at home

➤ Adhere to all circulars by the Ministry of Public Health

**In case you get any of the symptoms, contact the Ministry of Public Health on their hotline: 01594459 or 1214**

## Ministry of Public Health

- The Ministry is visiting areas where the pandemic has spread to follow up on the implementation of isolation and is following up with Lebanese who have recently returned to Lebanon.
- The ministry supervises all the conducted PCR tests for those who were in contact with positive cases in various government hospitals, at the expense of the ministry in order to determine the epidemiological reality in Lebanon and take the necessary steps.
- Conducting and following up on conducted PCR tests for citizens in various Lebanese regions.

## Lebanese Red Cross

23438 new 200	Number of PCR tests transferred to laboratories	10	Number of additional ambulance centers ready to respond	37	ambulance centers	2155 new 13	cases transferred to hospitals
166	Number of volunteers trained to transfer PCR tests	1,344	Number of trained paramedics	7496 new 46	total number of respondents	60903 new 90	number of those benefiting from awareness sessions
947 new 33	The number of university volunteers trained to follow up on prevention measures in companies and institutions	217	Number of university volunteers trained to conduct awareness sessions	550	total LRC volunteers for covid19	7232 new 46	number of trained managers for isolation centers
3281 new 4	Number of beneficiaries from educational electronic e-platforms COVID-19	35591 new 74	Number of distributed equipment **	1196175	total distributed posters, brochures, and flyers on covid19 prevention	325	number of prisons that have been disinfected

\* Includes: COVID-19 awareness sessions; awareness about the measures to take when returning to work and advanced training for field workers.

\*\* Includes: medical and sterilization equipment.

## Security services (Internal Security Forces, General Security, State Security, Army, General Directorate of Civil Defense)

- The army carried out patrols in different Lebanese regions to disperse gatherings
- General Security Forces followed up on the airport's set regulations for the return of Lebanese expatriates to their homeland and tracked potential cases in various Lebanese regions and ensured that they're adhering to the terms of home isolation.
- ISF aided Barja municipality in isolating 12 buildings. ISF also issued a number of fines:

fines issued since March 8, 2020		fines issued in the past 24 hours	
3519	institutions	1	institutions
13918	individuals	8	individuals
2449	medical masks since (2020/5/29)	75	medical masks
<b>19886</b>	<b>total</b>	<b>84</b>	<b>total</b>

- The General Directorate of Civil Defense prepared 427 personnel and 69 ambulances, to interfere, when necessary, and transport those infected with the emerging coronavirus. The directorate also carried out sterilization missions in public and private areas that were excluded from the decision to close.

## Ministry of Interior and Municipalities

- The Ministry issued circular No. 57 / 2020 on 14/6/2020 which amends the opening and closing hours of industrial and commercial establishments. All private institutions can now open in their official working hours while applying precautionary measures. The decision restricts amusement parks and Public gardens, children's play centers, nightclubs, games centers, theaters, cinemas, and social halls from open-

ing. the curfew decision remains intact from 12 am to 5 am.

- Implemented the extension of the general mobilization procedures according to the decision of the Council of Ministers. the general mobilization extension begins on 8/6/2020 and will remain active until 5/7/2020.

## Ministry of Public Works

Port	entered			left		
	Import	Direction	#	export	Direction	#
beirut	containers	singapore	1			
	containers	valencia	1			
	livestock	slovenia	1			
	cars	Alexandria	1			
sidon	asphalt	greece	1			
			5			

Flights arriving	Arrives from	Lebanese citizens on board	Arrival time
MEA	Delhi	9	10:00
MEA	dubai	7	13:10
LAT	turkey	30	02:00
MEA	riyadh	120	14:05
MEA	doha	85	16:00
MEA	dubai	120	17:20
MEA	Banjo	150	19:15
MEA	cameron	150	19:30
<b>total</b>	<b>8</b>	<b>671</b>	

Flights departing	departs to	individuals on board	departing time
MEA	delhi	8	20:20
MEA	athens	8	10:00
	<b>2</b>	<b>16</b>	
Cargo planes	arrives from	carrying	time
KUWAIT	kuwait	goods	19:00
DHL	bahrain	goods	19:20
LAT	turkey	goods	22:15
<b>TOTAL</b>			<b>3</b>

### Railways and joint transportation

#### Borders and Airport

-Transporting those arriving to Lebanon via Rafic Hariri International Airport or Syrian borders to the isolation centers in coordination with the Ministry of Public Health and security forces (25 buses)